

The Branford Trail: Pisgah Brook

The 30-mile Branford Trail is a unique trail that borders a majority of the town's perimeter. The white circle blazed trail passes through the shoreline, wetlands, many town parks, northerly woodlands, and many Branford Land Trust properties. The trail is separated into eight sections that begin and end at a public road with space for parking. Every home in Branford is within 15-minutes walking time of a trail. The entire Branford trail is best walked in a counterclockwise directions.

This 4.2 mile section of the Branford Trail features the Pisgah Brook and travels along the northern boundary of Branford through the Pisgah Brook Preserve. Walk east on Northford Road (toward North Branford) and then turn left to follow the trail northward into the woods. The trail crosses the Linsley Lake outlet stream, Queach Brook. Linsley Lake (also known as Linsley Pond) is famous in the field of ecology for the studies done there from the 1930s until the late 1970s by the noted Yale biologist George Evelyn Hutchinson.

The trail then follows Pisgah Brook upstream from Linsley Lake through an important wetland watershed area and a unique resource for a town of Branford's population. The trail continues to Brushy Plain Road, then crosses the road to end just past Lidyhites Pond. The pond is owned by Yale University and used for ecological studies. The trail stops at a stone wall (and yellow blazing) which signifies the start of the Regional Water Authority's property.

The next portion of the Branford Trail is the RWA's Lake Saltonstall property. Access for this part of the Branford Trail is for RWA permit holders only. Hikers with a permit may proceed onto Lake Saltonstall trails and then turn left to exit via the Hikers Parking Lot on Hosley Avenue.



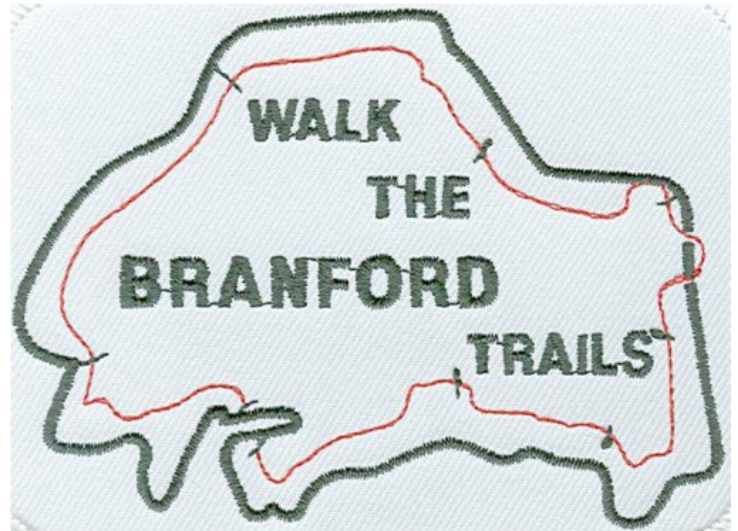
Photo by CT Department of Environmental Protection

Directions and Parking:

A parking lot for this portion of the Branford Trail is off Northford Road, about 0.1 mile past Brook Hills (aka Brookhills) Road coming from Rte 1 in Branford, or about 0.2 mile past Flax Mill Road coming from Twin Lakes Rd in North Branford. Alternatively, on-street parking is available along Brook Hills Road.

Permitted/Prohibited Activities:

This trail follows public and private roads. When adjacent to private property please respect resident's privacy. Dogs are permitted on leash. Please bag and pick up all dog waste.



Design for the Logo and Patch by Ralph Fuller

Easy Hike

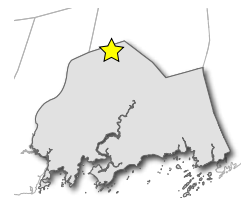
The Pisgah Brook section of the Branford Trail offers a nice hike and scenic views of some of Branford's lakes and ponds. There are many opportunities to see various types of wildlife. Please be aware that only permit holders can hike on RWA property.

Trails Length: approx. 3.10 miles
(Mill Plain to Brushy Plain)



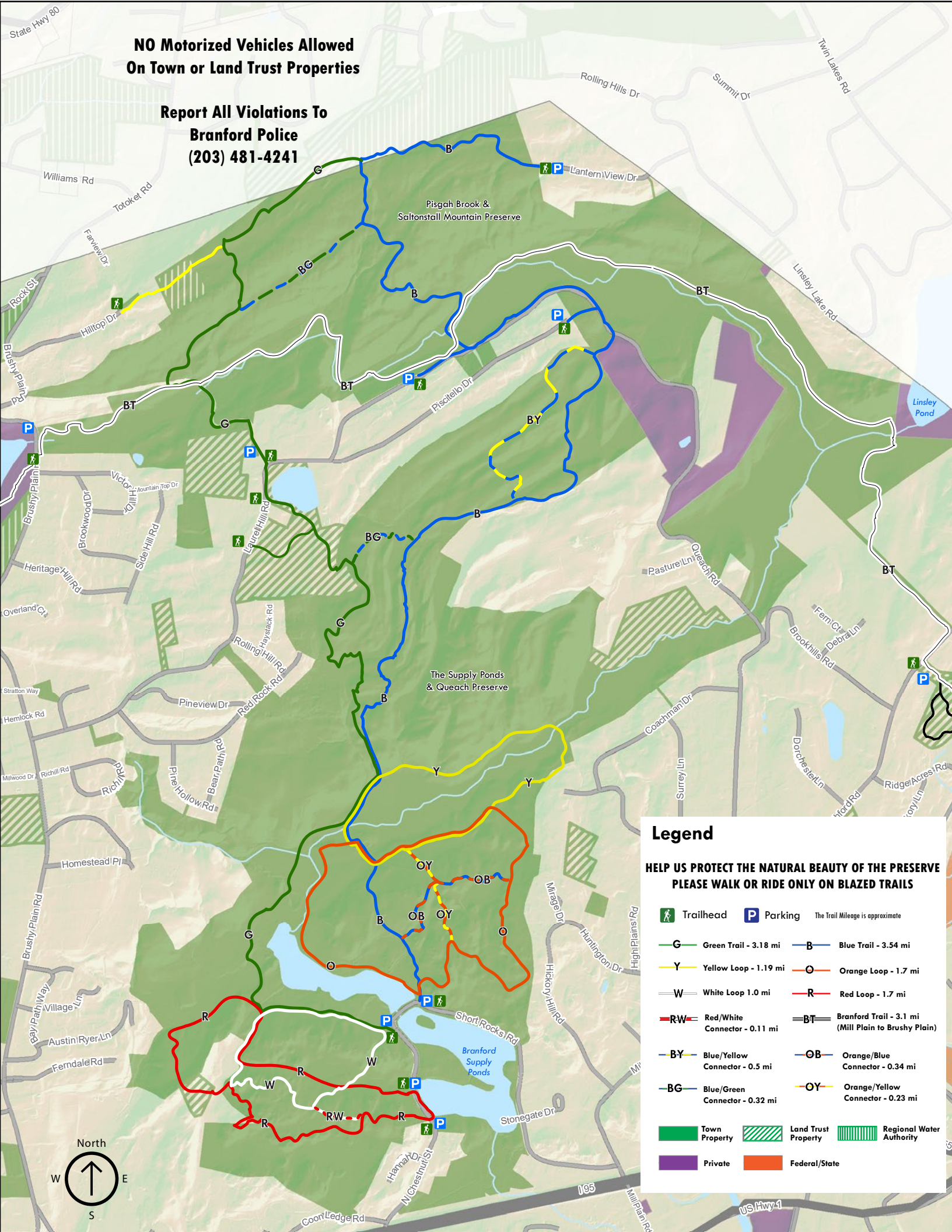
For more information about this walk contact:

Town of Branford
Parks and open Space Authority
(203) 488-8394 ext:120



**NO Motorized Vehicles Allowed
On Town or Land Trust Properties**

**Report All Violations To
Branford Police
(203) 481-4241**



Legend

**HELP US PROTECT THE NATURAL BEAUTY OF THE PRESERVE
PLEASE WALK OR RIDE ONLY ON BLAZED TRAILS**

Trailhead	Parking	The Trail Mileage is approximate
Green Trail - 3.18 mi	Blue Trail - 3.54 mi	
Yellow Loop - 1.19 mi	Orange Loop - 1.7 mi	
White Loop 1.0 mi	Red Loop - 1.7 mi	
Red/White Connector - 0.11 mi	Branford Trail - 3.1 mi (Mill Plain to Brushy Plain)	
Blue/Yellow Connector - 0.5 mi	Orange/Blue Connector - 0.34 mi	
Blue/Green Connector - 0.32 mi	Orange/Yellow Connector - 0.23 mi	
Town Property	Land Trust Property	Regional Water Authority
Private	Federal/State	

